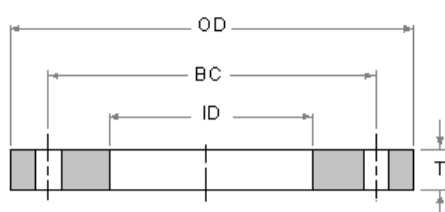
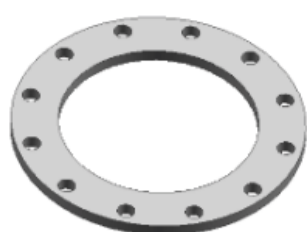




BRIDAS EMI GROUP S.A.

AWWA Class B



El ratio de presión a temperatura atmosférica es de 86 psi.

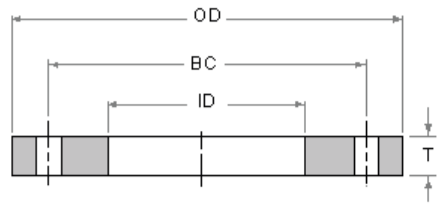
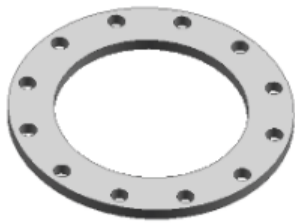
Dimensiones en pulgadas y (milímetros)

Tamaño Nominal Tubería	Ø exterior (OD)	Ø interior (ID)	Nº de taladros	Ø tornillo	Ø Círculo tal (BC)	Espesor (T)	Peso (lbs)
4 (100)	9 (228.6)	4.57 (116.1)	8	0.625 (15.9)	7.5 (190.5)	0.625 (15.9)	7.9 (3.6)
5 (125)	10 (254)	5.66 (143.8)	8	0.75 (19.1)	8.5 (215.9)	0.625 (15.9)	8.8 (4)
6 (150)	11 (279.4)	6.72 (170.7)	8	0.75 (19.1)	9.5 (241.3)	0.688 (17.5)	11 (5)
8 (200)	13.5 (342.9)	8.72 (221.5)	8	0.75 (19.1)	11.75 (298.5)	0.668 (17)	15.2 (6.9)
10 (250)	16 (406.4)	10.88 (276.4)	12	0.875 (22.2)	14.25 (362)	0.688 (17.5)	19.6 (8.9)
12 (300)	19 (482.6)	12.88 (327.2)	12	0.875 (22.2)	17 (431.8)	0.688 (17.5)	28.4 (12.9)
14 (350)	21 (533.4)	14.19 (360.4)	12	1 (25.4)	18.75 (476.3)	0.688 (17.5)	34.8 (15.8)
16 (400)	23.5 (596.9)	16.19 (411.2)	16	1 (25.4)	21.25 (539.8)	0.688 (17.5)	42.1 (19.1)
18 (450)	25 (635)	18.19 (462)	16	1.125 (28.6)	22.75 (577.9)	0.688 (17.5)	42.1 (19.1)
20 (500)	27.5 (698.5)	20.19 (512.8)	20	1.125 (28.6)	25 (635)	0.688 (17.5)	49.6 (22.5)
22 (550)	29.5 (749.3)	22.19 (563.6)	20	1.25 (31.8)	27.25 (692.2)	0.75 (19.1)	58 (26.3)
24 (600)	32 (812.8)	24.19 (614.4)	20	1.25 (31.8)	29.5 (749.3)	0.75 (19.1)	68.3 (31)
26 (650)	34.25 (870)	26.19 (665.2)	24	1.25 (31.8)	31.75 (806.5)	0.812 (20.6)	81.1 (36.8)
28 (700)	36.5 (927.1)	28.19 (716)	28	1.25 (31.8)	34 (863.6)	0.875 (22.2)	96.1 (43.6)
30 (750)	38.75 (984.3)	30.19 (766.8)	28	1.5 (38.1)	36 (914.4)	0.875 (22.2)	102.7 (46.6)
32 (800)	41.75 (1060.5)	32.19 (817.6)	28	1.5 (38.1)	38.5 (977.9)	0.938 (23.8)	134.5 (61)
34 (850)	43.75 (1111.3)	34.19 (868.4)	32	1.5 (38.1)	40.5 (1028.7)	0.938 (23.8)	140.4 (63.7)
36 (900)	46 (1168.4)	36.19 (919.2)	32	1.5 (38.1)	42.75 (1085.9)	1 (25.4)	163.6 (74.2)
38 (950)	48.75 (1238.3)	38.19 (970)	32	1.5 (38.1)	45.25 (1149.4)	1 (25.4)	188.5 (85.5)
40 (1000)	50.75 (1289.1)	40.19 (1020.8)	36	1.5 (38.1)	47.25 (1200.2)	1 (25.4)	196 (88.9)
42 (1050)	53 (1346.2)	42.19 (1071.6)	36	1.5 (38.1)	49.5 (1257.3)	1.125 (28.6)	237.9 (107.9)
44 (1100)	55.25 (1403.4)	44.19 (1122.4)	40	1.5 (38.1)	51.75 (1314.5)	1.125 (28.6)	253.3 (114.9)
46 (1150)	57.25 (1454.2)	46.19 (1173.2)	40	1.5 (38.1)	53.75 (1365.3)	1.125 (28.6)	264.3 (119.9)
48 (1200)	59.5 (1511.3)	48.19 (1224)	44	1.5 (38.1)	56 (1422.4)	1.25 (31.8)	312.2 (141.6)
50 (1250)	61.75 (1568.5)	50.19 (1274.8)	44	1.5 (38.1)	58.25 (1479.6)	1.25 (31.8)	333.3 (151.2)
52 (1300)	64 (1625.6)	52.19 (1325.6)	44	1.5 (38.1)	60.5 (1536.7)	1.25 (31.8)	355.2 (161.1)
54 (1350)	66.25 (1682.8)	54.19 (1376.4)	44	1.75 (44.5)	62.75 (1593.9)	1.375 (34.9)	403.2 (182.9)
60 (1500)	73 (1854.2)	60.19 (1528.8)	52	1.75 (44.5)	69.25 (1759)	1.5 (38.1)	516.8 (234.4)
66 (1650)	80 (2032)	66.19 (1681.2)	52	1.75 (44.5)	76 (1930.4)	1.625 (41.3)	673.5 (305.5)
72 (1800)	86.5 (2197.1)	72.19 (1833.6)	60	1.75 (44.5)	82.5 (2095.5)	1.75 (44.5)	814.4 (369.4)
78 (1950)	93 (2362.2)	78.19 (1986)	64	2 (50.8)	89 (2260.6)	2 (50.8)	1015.5 (460.6)
84 (2100)	99.75 (2533.7)	84.19 (2138.4)	64	2 (50.8)	95.5 (2425.7)	2 (50.8)	1161.2 (526.7)
90 (2250)	106.5 (2705.1)	90.19 (2290.8)	68	2.25 (57.2)	102 (2590.8)	2.25 (57.2)	1436.3 (651.5)
96 (2400)	113.25 (2876.6)	96.19 (2443.2)	68	2.25 (57.2)	108.5 (2755.9)	2.25 (57.2)	1619.5 (734.6)
102 (2550)	120 (3048)	102.19 (2595.6)	72	2.5 (63.5)	114.5 (2908.3)	2.5 (63.5)	1953.1 (885.9)
108 (2700)	126.75 (3219.5)	108.19 (2748)	72	2.5 (63.5)	120.75 (3067.1)	2.5 (63.5)	2177.9 (987.9)
114 (2850)	133.5 (3390.9)	114.19 (2900.4)	76	2.75 (69.9)	126.75 (3219.5)	2.75 (69.9)	2579.2 (1169.9)
120 (3000)	140.25 (3562.4)	120.19 (3052.8)	76	2.75 (69.9)	132.75 (3371.9)	2.75 (69.9)	2850.1 (1292.8)
126 (3150)	147 (3733.8)	126.19 (3205.2)	80	3 (76.2)	139.25 (3537)	3 (76.2)	3318 (1505)
132 (3300)	153.75 (3905.3)	132.19 (3357.6)	80	3 (76.2)	145.75 (3702.1)	3 (76.2)	3639 (1650.6)
144 (3600)	167.25 (4248.2)	144.19 (3662.4)	84	3.25 (82.6)	158.25 (4019.6)	3.25 (82.6)	4559.4 (2068.1)

Notas:

- El diámetro interior de las bridas tipo Ring puede ser aumentado o achaflanado para acomodar el diámetro exterior de la tubería que sobrepasase el valor nominal.
- A partir del diámetro 26 inch el cliente debe especificar el diámetro interior
- Conversión métrica:
 Tamaño Nominal de la tubería [in] x 25 = [mm]
 Dimensiones [in] x 25,4 = [mm]
 Presión [psi] x 6,895 = [kPa]

AWWA Class D



Máximo ratio de presión a temperatura atmosférica:

- Tamaño de 4 a 12 in (100 a 300 mm): 175 Psi (1,207 KPa)
- Tamaño mayor de 12 in (300 mm): 150 Psi (1,034 KPa)

Dimensiones en pulgadas y (milímetros)

Tamaño Nominal Tubería	Ø exterior (OD)	Ø interior (ID)	Nº de taladros	Ø tornillo	Ø Círculo tal (BC)	Espesor (T)	Peso lbs (kg)
4 (100)	9 (228.6)	4.57 (116.1)	8	0.625 (15.9)	7.5 (190.5)	0.625 (15.9)	7.9 (3.6)
5 (125)	10 (254)	5.66 (143.8)	8	0.75 (19.1)	8.5 (215.9)	0.625 (15.9)	8.8 (4)
6 (150)	11 (279.4)	6.72 (170.7)	8	0.75 (19.1)	9.5 (241.3)	0.688 (17.5)	11 (5)
8 (200)	13.5 (342.9)	8.72 (221.5)	8	0.75 (19.1)	11.75 (298.5)	0.688 (17.5)	15.7 (7.1)
10 (250)	16 (406.4)	10.88 (276.4)	12	0.875 (22.2)	14.25 (362)	0.688 (17.5)	19.6 (8.9)
12 (300)	19 (482.6)	12.88 (327.2)	12	0.875 (22.2)	17 (431.8)	0.812 (20.6)	33.5 (15.2)
14 (350)	21 (533.4)	14.19 (360.4)	12	1 (25.4)	18.75 (476.3)	0.938 (23.8)	47.6 (21.6)
16 (400)	23.5 (596.9)	16.19 (411.2)	16	1 (25.4)	21.25 (539.8)	1 (25.4)	61.1 (27.7)
18 (450)	25 (635)	18.19 (462)	16	1.125 (28.6)	22.75 (577.9)	1.062 (27)	64.8 (29.4)
20 (500)	27.5 (698.5)	20.19 (512.8)	20	1.125 (28.6)	25 (635)	1.125 (28.6)	81.1 (36.8)
22 (550)	29.5 (749.3)	22.19 (563.6)	20	1.25 (31.8)	27.25 (692.2)	1.188 (30.2)	91.7 (41.6)
24 (600)	32 (812.8)	24.19 (614.4)	20	1.25 (31.8)	29.5 (749.3)	1.25 (31.8)	113.8 (51.6)
26 (650)	34.25 (870)	26.19 (665.2)	24	1.25 (31.8)	31.75 (806.5)	1.312 (33.3)	131.4 (59.6)
28 (700)	36.5 (927.1)	28.19 (716)	28	1.25 (31.8)	34 (863.6)	1.312 (33.3)	144.2 (65.4)
30 (750)	38.75 (984.3)	30.19 (766.8)	28	1.5 (38.1)	36 (914.4)	1.375 (34.9)	161.4 (73.2)
32 (800)	41.75 (1060.5)	32.19 (817.6)	28	1.5 (38.1)	38.5 (977.9)	1.5 (38.1)	215.2 (97.6)
34 (850)	43.75 (1111.3)	34.19 (868.4)	32	1.5 (38.1)	40.5 (1028.7)	1.5 (38.1)	224.9 (102)
36 (900)	46 (1168.4)	36.19 (919.2)	32	1.5 (38.1)	42.75 (1085.9)	1.625 (41.3)	265.9 (120.6)
38 (950)	48.75 (1238.3)	38.19 (970)	32	1.5 (38.1)	45.25 (1149.4)	1.625 (41.3)	306.4 (139)
40 (1000)	50.75 (1289.1)	40.19 (1020.8)	36	1.5 (38.1)	47.25 (1200.2)	1.625 (41.3)	318.6 (144.5)
42 (1050)	53 (1346.2)	42.19 (1071.6)	36	1.5 (38.1)	49.5 (1257.3)	1.75 (44.5)	369.9 (167.8)
44 (1100)	55.25 (1403.4)	44.19 (1122.4)	40	1.5 (38.1)	51.75 (1314.5)	1.75 (44.5)	394.2 (178.8)
46 (1150)	57.25 (1454.2)	46.19 (1173.2)	40	1.5 (38.1)	53.75 (1365.3)	2 (50.8)	469.8 (213.1)
48 (1200)	59.5 (1511.3)	48.19 (1224)	44	1.5 (38.1)	56 (1422.4)	2 (50.8)	498.5 (226.1)
50 (1250)	61.75 (1568.5)	50.19 (1274.8)	44	1.75 (44.5)	58.25 (1479.6)	2 (50.8)	516.5 (234.3)
52 (1300)	64 (1625.6)	52.19 (1325.6)	44	1.75 (44.5)	60.5 (1536.7)	2 (50.8)	551.2 (250)
54 (1350)	66.25 (1682.8)	54.19 (1376.4)	44	1.75 (44.5)	62.75 (1593.9)	2.125 (54)	624.1 (283.1)
60 (1500)	73 (1854.2)	60.19 (1528.8)	52	1.75 (44.5)	69.25 (1759)	2.25 (57.2)	775.8 (351.9)
66 (1650)	80 (2032)	66.19 (1681.2)	52	1.75 (44.5)	76 (1930.4)	2.5 (63.5)	1035.5 (469.7)
72 (1800)	86.5 (2197.1)	72.19 (1833.6)	60	1.75 (44.5)	82.5 (2095.5)	2.625 (66.7)	1220.7 (553.7)
78 (1950)	93 (2362.2)	78.19 (1986)	64	2 (50.8)	89 (2260.6)	2.75 (69.9)	1397.3 (633.8)
84 (2100)	99.75 (2533.7)	84.19 (2138.4)	64	2 (50.8)	95.5 (2425.7)	2.875 (73)	1668.7 (756.9)
90 (2250)	106.5 (2705.1)	90.19 (2290.8)	68	2.25 (57.2)	102 (2590.8)	3 (76.2)	1913.4 (867.9)
96 (2400)	113.25 (2876.6)	96.19 (2443.2)	68	2.25 (57.2)	108.5 (2755.9)	3.25 (82.6)	2338.7 (1060.8)
102 (2550)	120 (3048)	102.19 (2595.6)	72	2.5 (63.5)	114.5 (2908.3)	3.25 (82.6)	2540.6 (1152.4)
108 (2700)	126.75 (3219.5)	108.19 (2748)	72	2.5 (63.5)	120.75 (3067.1)	3.375 (85.7)	2939.4 (1333.3)
114 (2850)	133.5 (3390.9)	114.19 (2900.4)	76	2.75 (69.9)	126.75 (3219.5)	3.5 (88.9)	3280 (1487.8)
120 (3000)	140.25 (3562.4)	120.19 (3052.8)	76	2.75 (69.9)	132.75 (3371.9)	3.5 (88.9)	3624.8 (1644.2)
126 (3150)	147 (3733.8)	126.19 (3205.2)	80	3 (76.2)	139.25 (3537)	3.75 (95.3)	4149.5 (1882.2)
132 (3300)	153.75 (3905.3)	132.19 (3357.6)	80	3 (76.2)	145.75 (3702.1)	3.875 (98.4)	4699.2 (2131.5)
144 (3600)	167.25 (4248.2)	144.19 (3662.4)	84	3.25 (82.6)	158.25 (4019.6)	4.125 (104.8)	5784.7 (2623.9)

Notas:

1. El diámetro interior de las bridas tipo Ring puede ser aumentado o achaflanado para acomodar el diámetro exterior de la tubería que sobrepasase el valor nominal.
2. A partir del diámetro 26 inch el cliente debe especificar el diámetro interior
3. Conversión métrica:
 Tamaño Nominal de la tubería [in] x 25 = [mm]
 Dimensiones [in] x 25,4 = [mm]
 Presión [psi] x 6,895 = [kPa]



BRIDAS EMI GROUP S.A.

info@bridasemi.com.ar

www.bridasemi.com.ar

Rondeau 1560 Wilde, Buenos Aires. Argentina
Tel: 4220 -4414 4414 /4289 4572 - 4289 2030 / 4137 7325